

MOUSE ON THE MOVE

Written by
JANET STANFORD AND KATHRYN CHASE BRYER

Music by
TIM GUILLOT

STUDY GUIDE



BIRMINGHAM
CHILDREN'S
THEATRE

PROVIDED BY BIRMINGHAM CHILDREN'S THEATRE

PERFORMANCE DATES & HOW TO USE THIS GUIDE

“Mouse of the Move”
Written By Janet Stanford & Kathryn Chase Bryer
Music by Tim Guillot
Directed by Rebecca Yeager

Nellie and Amelia are two adventurous mice ready to explore the world beyond their little mouse-hole. They decide to go to the moon, since it is cat-free and made entirely of delicious, mouth-watering cheese.

Wee Folks Theatre
March 17th - April 22nd

Visit www.bct123.org for more information or to book a field trip today!

HOW TO USE THIS GUIDE

This classroom guide for “Mouse on the Move” is designed for Alabama students ranging from pre-k to kindergarten.

Use this guide to prepare for your trip to the theatre with pre-show activities and a theatre etiquette guide.

After the show, further the experience with activities that can be integrated into your current classroom curriculum.

This guide meets the Alabama Standards for Early Learning and Development, outlined at children.alabama.gov.

(All worksheets can be found in the “Study Guide Printables” packet provided).

Lastly, we would love to hear from you! Please have your students fill out the “Post Show Response” form in the printables packet.

TABLE OF CONTENTS

STUDY GUIDE

Your Role as the Audience.....	4
About the Artists.....	5
Pre-Show Activities: Defining Theatre & Additional Reads.....	6
Activities for the Classroom.....	7

STUDY GUIDE PRINTABLES PACKET

Classroom Activity #3: Mouse Cut & Play Worksheet.....	2
Post Show Response.....	3

YOUR ROLE AS THE AUDIENCE

Dear Audience Members,

Birmingham Children's Theatre is excited for you to see our production of "Mouse on the Move" by Janet Stanford & Kathryn Chase Bryer, the newest installment in our Theatre for Very Young Audiences series!

A few rules we want to make sure everyone is aware of:

- We require all audience members 2 years or older to wear a face mask while in the theatre and during the performance.
- We require all audience members 2 years or older to wear a face mask while in the theatre and during the performance.
 - *All BCT staff and performers are vaccinated and at this time we plan for them to wear face coverings as well. BCT continues to watch the ongoing developments surrounding COVID-19 in our community and will notify all participants if there is a change to that policy before the show opens.
- Cell phones off! And put away - those glowing screens are very distracting.
- Have fun!

When you arrive at the theatre, our staff will meet you at your vehicle, guide your class to the theatre, and help you get seated. We have limited audience capacity for our shows this spring, so everyone has the ability to space out and feel a bit more safe and comfortable.

Through repetition, rhyme, song, and a lot of audience interaction, this show invites young kids to not just watch but experience creative storytelling. In order to make this the best show possible for you and your fellow audience members, here are some simple rules to follow:

While the show is happening, DO

- Give your full attention to the actors and the story
- Feel free to laugh, gasp, and applaud!

And to make sure everyone can enjoy the show, we ask that you DON'T

- Talk to your friends and neighbors
- Wave, shout, or disrupt the performance

BCT is thrilled to be offering a new series of shows specifically for our youngest audiences featuring engaging, interactive, immersive experiences for early learners. We hope you enjoy "Mouse on the Move"!

Thank You,

Birmingham Children's Theatre

ABOUT THE ARTISTS

JANET STANDFORD: PLAYWRIGHT

Janet Stanford is a director, Equity actor and playwright with a long list of credits in regional and college theatres. As artistic director of BAPA's Imagination Stage, Stanford is guiding the transition of this 21-year-old arts institution through its move to a new facility that has a 450-seat mainstage, 200-seat second stage and seven studios. During her tenure at Imagination Stage, she has everal new works with multicultural themes and spearheaded the organization's Learning-Biotechnology-Through-Theatre project which is widely acknowledged as an innovative tool for introducing complex ethical questions to teen audiences. Stanford's production of *Free Like Br'er Rabbit* by Caleen Sinnette Jennings, published by Dramatic Publishing, was featured at the Kennedy Center's One Theatre World 2000 Conference. Her own plays for children include *Jumbling Through Teddyscape*, produced by the Virginia Stage Company, and *Snow White—the Purdiest Gal in the West*, published by Samuel French Ltd. Stanford currently serves as vice-president of the League of Washington Theatres and is the recipient of two recent travel and observership grants from ASSITEJ/USA and the Canadian Embassy.

KATHRYN CHASE BRYER: PLAYWRIGHT

Kathryn Bryer is the Associate Artistic Director for Imagination Stage in Bethesda, MD. She is a director and playwright with a long list of credits in professional theatre and film. Her playwriting credits include *Inside Out*, *Mouse on the Move* and *The Lion, Witch and the Wardrobe*. Production credits include *The Last Five Years*, *The Oldest Boy: A Play in Three Ceremonies*, *The Wolves*, *Cinderella*, *Balloonacy*, *Charlotte's Web*, *Peter and the Starcatcher*, Disney's *Beauty and the Beast*, *The Little Mermaid* & many many more! A few awards include Helen Hayes Award: Outstanding Director of a Musical *Fly By Night* and *Cinderella*.

TIMOTHY GUILLOT: MUSICIAN

Timothy Guillot- is a playwright and composer from Washington, DC via New York. His plays, musicals, and original compositions have been read and performed in the US, Europe, and South Korea. His work has been read and performed at Center Theatre Group, Alliance Theatre, The Lark Playwrights' Center, Imagination Stage, Yale Cabaret, Forum Theatre, the Mead Theatre Lab, Source Festival, Capital Fringe Festival, and many others. He is the 2016 winner of the Dramatic Writing Prize from the Adirondack Shakespeare Company, the 2011 recipient of the KCACTF Musical Theatre Award, a finalist for the Kendeda Graduate Playwriting Competition, the Larry Neal Writers' Awards, the nuVoices Festival, and a semifinalist for the O'Neill (twice), and Blue Ink. At Imagination Stage, Tim's work as a composer on TVY plays *Mouse on the Move*, *Inside Out*, and *Blue* has been remounted over 20 times at Imagination Stage, and seen additional productions in Oregon, Oklahoma, New York, and Florida. In 2017, *Inside Out* was performed at the ASSITEJ festival in South Korea, becoming the first American company to present in the festival's history. Tim is also a commissioned artist at Imagination Stage, where he co-wrote the new musical adaptation of Dickens' *Davy Copperfield* with Janet Stanford, which received its world premiere in February of 2019.

PRE-SHOW ACTIVITIES

DEFINING THEATRE EXERCISE

Questions:

1. “Have you ever seen a play?”
(If they haven’t, make sure to define it for them).
2. “What kinds of things happen in a play?”
3. “What kind of plays would you like to see?” or
“What would you like to see if you are watching a play?”
4. “Where do plays typically Happen?”
5. “How should the audience behave and act during a play?”
(Make a list of things a good audience member does and a list of things a bad audience member does).

Here are a few things you can discuss with your class to help them understand what to expect at a live theatre production:

- Theatre features live on-stage actors. They have spent many weeks rehearsing for the performance.
- The audience is a very important part of the performance. Appreciation and enthusiasm for the performers is shown by close attention and participation and applause at the proper times. The success of the play depends on the appropriate interaction between cast and audience.
- The theatre is a very special place. Its atmosphere is entirely different from your home where the television is always available.
- It is easy to identify with live actors. You can see how they use their bodies and voices to convey different emotions.
- Actors wear costumes and make-up to help create the impression of the characters they play.
- There is much more to most live performances than actors. Special sets, effects, lighting, music, costumes, and of course, the audience add to the total experience.

ADDITIONAL READINGS

Enjoy more stories about transportation and mice!

- If You Give a Mouse a Cookie by Laura Joffe Numeroff and Felicia Bond
- Mouse Paint by Ellen Stoll Walsh
- Toot Toot, Beep Beep! by Emma Garcia
- Wake Up, Engines! by Denise Dowling Mortensen
- The Little Airplane by Lois Lenski
- Busy Boats by Tony Mitton and Ant Parker

ACTIVITIES FOR THE CLASSROOM

1. RED LIGHT, GREEN LIGHT MOVEMENT

Key Concepts Addressed: Gross motor skills, following directions

- **Materials:** Green and red light signs, music, Hula hoops, scarves, box fan
- **Directions:** Make red and green stop lights using construction paper and popsicle sticks.
- **Activity Rules:** When the green light is held up, children move around the room as a car. When the red light is held up, the children stop.
 - As the children become comfortable with the red and green lights, introduce the yellow light for moving slowly.
 - Once the children are familiar with cars, try alternating between various modes of transportation, having the children move as cars, airplanes, and boats.
 - Incorporate music for starting and stopping as they progress.
 - Once they understand using their eyes and ears to be observant of when to stop and when to go, you can begin to implement additional props. Hula Hoops can be used as cars. Link the children together with handheld scarves to create a train or use a box fan to create “the wind” for them as they fly like airplanes!

2. CAR WASH

Key Concepts Addressed: Peer cooperation, listening, reality vs. fantasy

- **Materials:** Scarves, ribbons, sponges, or crepe paper, a spray bottle (to be operated by a teacher or assistant), bubbles (to be operated by a teacher or assistant), fun car/car wash music to play during the dramatic play exercise.
- **Direction:** Line the children up in two parallel lines facing each other. Give each of them two scarves (or crepe paper, ribbon, or sponges) and choose one child to go first. They will be the car and start at the far end of the two lines of children. Slowly, they walk through while the other children “wash” the car gently using their props. The teacher and assistant go back and forth, spraying the water and blowing the bubbles. Rules should be set at the top of the exercise to make it clear that the children in the lines must stand still while washing, and that everyone will get a turn to go through the car wash and enjoy the water and bubbles. Poly Spots or tape on the floor can help the children understand where they should stand.

CONT.

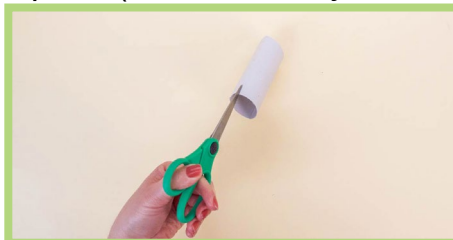
ACTIVITIES FOR THE CLASSROOM

3. MOUSE CUT AND PLAY

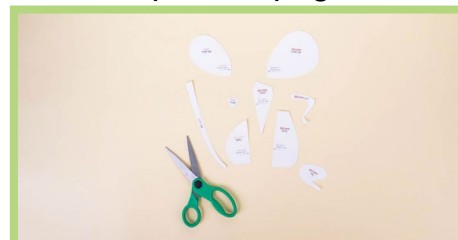
Materials: Construction paper (brown, pink, white, yellow), Googly eyes, Paper tube, Glue stick, Scissors, Mouse Craft Template (found in *Study Guide Printables* packet, page 2).



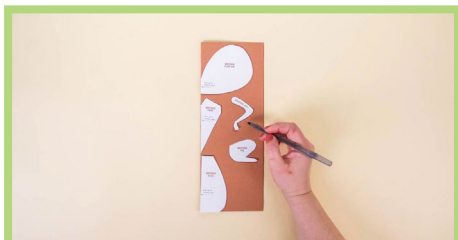
1. First, flatten out your paper tube by pressing down on its edges. It must still be able to stand on its own.



2. Cut some 1/2" slits at the top of the tube. (This is where you will insert the ears later.)



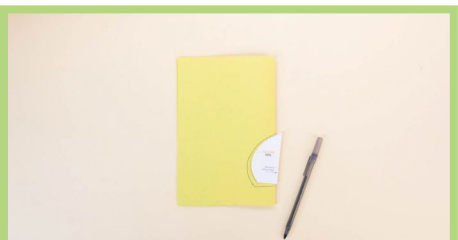
3. Cut out all of the shapes on the printed template resource sheet.



4. Fold the brown sheet of construction paper in half widthwise. Line up the head, belly and ear templates to the folded edge of the paper. Trace the arm & leg templates onto the double layer of brown paper.



5. Fold the pink sheet of paper in half. Line up the edge of the inner ear template to the folded edge. Trace the tip of the nose & the mouse tail.



6. Next, fold the yellow sheet of paper in half. Line up & trace the belly template to the folded edge.



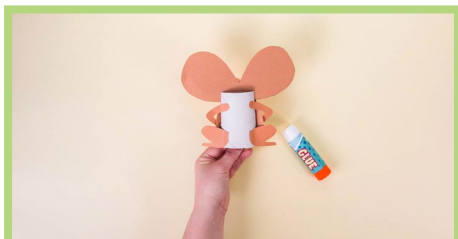
7. Cut out all of the shapes!



8. Layer the two belly shapes & glue them together. Glue them onto the paper tube. Next, layer the pink & brown ears & glue them together as well. Insert the ears into the slits at the top of the paper tube.



9. Your mouse is starting to take shape! Glue the pink tip of the nose onto your head shape. Fold the head to get a triangular shape, then fold the tabs at the top of the head & glue to the ears.



10. Glue the tips of the legs, arms & tail to the back of the paper tube.



11. Cut out some small white strips of paper to make whiskers & glue them on. Glue the googly eyes & tail last.



12. Ta-da! Your mouse friend is complete!



BIRMINGHAM
CHILDREN'S
T H E A T R E

THANKS FOR YOUR SUPPORT!

QUESTIONS? CONTACT DIRECTOR OF EDUCATION,
JESSIE KISOR AT jessie@bct123.org
